



DS-MAX SKYFIELDS

THE UPWARD LIVING



JOY OF LIVING

2 & 3-BHK APARTMENTS | 2B+G+14 FLOORS | 870 UNITS

PRM/KA/RERA/1250/304/PR/251024/007179
BMRDA APPROVED

Homes designed for your Upward Living

Each meticulously designed residence offers a harmonious blend of elegance and comfort, where every detail is perfectly crafted. From the moment you step into your prosperous home, you'll be captivated by the seamless integration of modern design and timeless aesthetics.

Beyond the walls of your residence, a world of possibilities awaits. Immerse yourself in breathtaking views, indulge in world-class amenities, and experience a lifestyle that surpasses expectations. Unwind in lush green spaces, socialize with like-minded individuals, or enjoy peaceful moments.

DS-MAX SkyFields is more than just a residence; it's a journey into the future of luxury living. Experience the Upward Living, where every day is an opportunity to heighten your aspirations.





Unsubtle Highlights – DS-MAX SkyFields

- **Prime Location, Unmatched Convenience:** Just 10 minutes from Bengaluru's leading IT hub - ITPB, with quick access to 30+ MNCs and six major tech parks.
- **Excellent Connectivity:** Only 7 minutes to Kadugodi (Tree Park) Metro Station of Purple Line for easy citywide access.
- **Vibrant Lifestyle:** Surrounded by shopping malls, entertainment venues, leisure activities, and cinemas.
- **Exquisite Amenities:** Enjoy an elevated lifestyle with tailored, super-luxurious amenities.
- **Thoughtfully Designed Homes:** Spacious 2 & 3-BHK residences crafted for maximum comfort and elegance.
- **Educational & Medical Proximity:** Close to top schools, reputable colleges, and renowned multispecialty hospitals.
- **Secured Investment:** Benefit from a high-value, secure investment with DS-MAX Lifetime of Assurance.

Less than 15 mins.



Educational Institutions

Bangalore International Academy Whitefield
Winmore Academy
MVJ College of Engineering/ MVJ PU College
Ryan International School



Business Hub & Tech Parks:

International Tech Park Bangalore (ITPB)
Capitol Towers Tech Park
GR Tech Park
SCB Tech Park



Shopping & Leisure:

Vishal Mega Mart
Zudio
Park Square Mall
Nexus Shantiniketan Mall



Health & Wellbeing:

Aster Hospital
Manipal Hospital Whitefield
Vydehi Hospital
TATA MD Healthcare Centre



Connectivity

Whitefield Railway Station
Kadugodi Tree Park Metro Station
Devanagonthi Railway station
Hopefarm Metro station

Crafted To Deliver Grandeur & Comfort

Amenities are an add-on to property value. But can it add more value to life?

Health & Safety are one of the most common worries. Taking this into account, SkySanman is loaded with Super-Luxurious Amenities that enables overall wellbeing & ensures safety of your loved ones.

Stay worry-free & Live to the fullest at DS-MAX Homes!

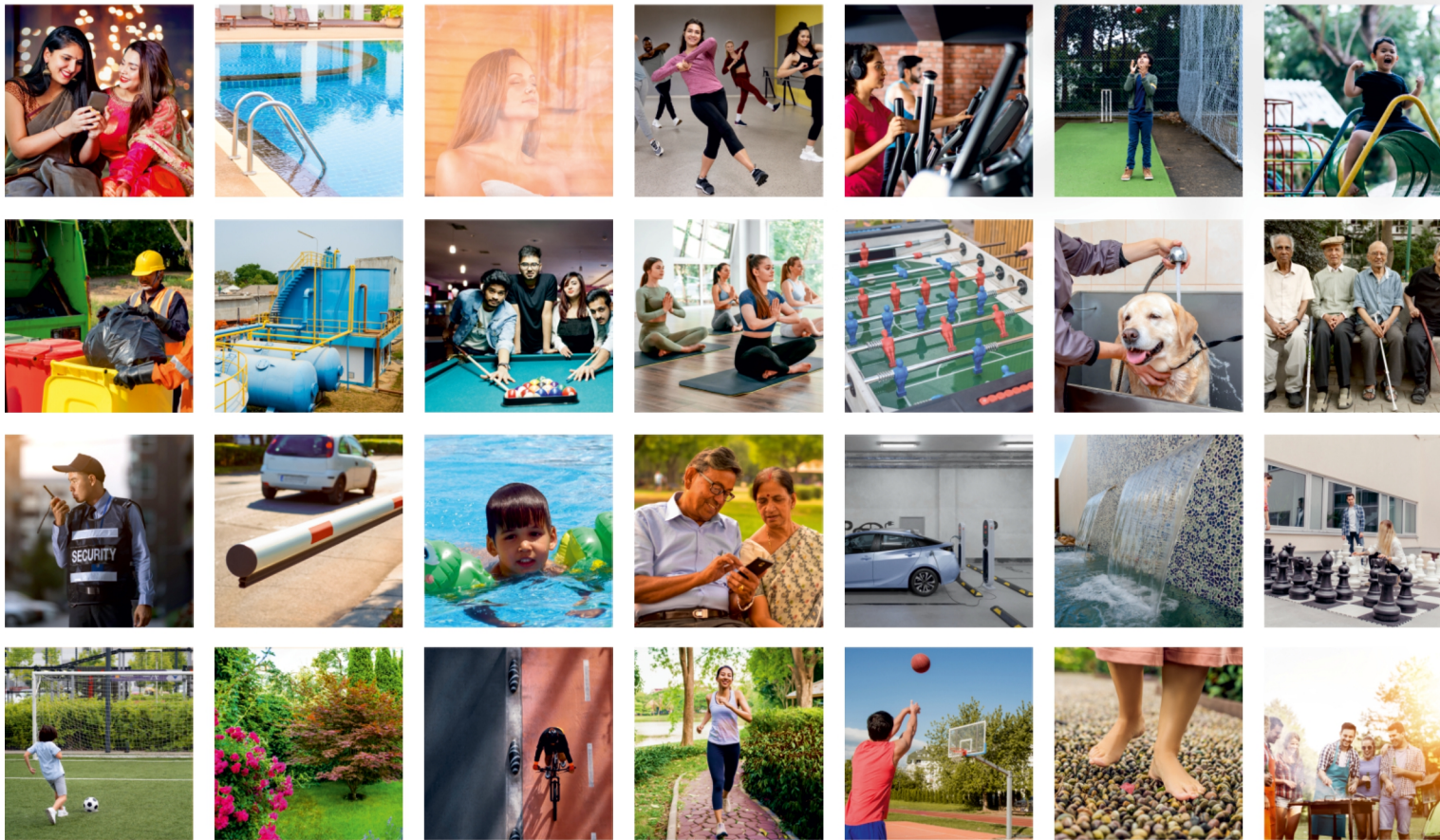
AMENITIES

- Reflexology Pathway
- Boundary Plantation
- Covered Car Parking (Basement)
- Cascade Water Curtain
- Automatic Boom Barriers
- Entrance Plaza
- Security 24/7
- Information Kiosk
- Entrance Lounge
- Cricket Practice Net
- Yoga Deck Provision for Dance Room / Creation Room
- Climbing Wall
- Hopscotch
- Bloggers Deck
- Creative Wall
- Out Door Chess Board
- Kids Corner
- Toddlers Park
- Trampoline
- Jogging Track

- Cycling Track
- Skating Rink
- Out Door Gym
- Garden Water Body
- Senior Citizens Gazebo
- Barbeque Counter
- Pet Wash Area
- Avenue Seating
- Visitors Parking
- Kids Drop-Off Point
- Flag Hoist Junction

CLUB HOUSE

- Table Tennis
- Snooker
- Foosball
- Gym
- Party Hall
- Creative Center
- Sauna And Steam (ladies/gents)
- Swimming Pool
- Toddlers Pool



JOY OF LIVING

200+ NATIONAL & INTERNATIONAL AWARDS



The Most Reliable
Real Estate Brand Award



Most Trusted
Real Estate Brand Award



Most Loved
Real Estate Brand Award



Futuristic Innovator In People
Centric Property Solutions



Industry Achievement
Award - Real Estate



Most Valued Real Estate Company
in Residential & Commercial
Projects Across South India

DS-MAX PROPERTIES

I assure you Lifetime of Grandeur & Comfort

A home is not just a physical structure but a vessel of emotions and memories that shape our daily lives. As your trusted builder, I pay close attention to every detail and aspect of your home because it represents your dreams and life. I strive to create an unforgettable and unmatched living experience by selecting the best location, amenities, structure, and everything else to give you an uncompromising and unbelievable lifestyle.

DS-MAX SkyFields is a fabulous project designed to fulfill the dreams of 870 families who seek to own their dream homes for eternity.

Once again, welcome to the DS-Max family and the world of everlasting joy.



DR K V SATISH,
CHAIRMAN, DS-MAX GROUP

JOY OF LIVING